



# **Peace of Mind: Determining Structural Integrity Non-Invasively**

**Monica L. Flournoy, P.E.  
State Materials Engineer  
Office of Materials and Testing**

# Three Questions

1. What is Non-Destructive Testing?
2. What is Ground Penetrating Radar (GPR) and how is it used in State DOTs?
3. How is OMAT using GPR?

# Non-Destructive Testing

A process whereby materials, components, or structures are tested for differences in characteristics without destroying its serviceability.



# Ground Penetrating Radar (GPR)

- Structural Assessment
- Void or Sinkhole Detection
- Pavement Analysis
- Geotechnical & Environmental Assessment
- Utility Location
- Archaeological Survey



# GPR - I-85 Troup

## Resurfacing Quantities & Estimate

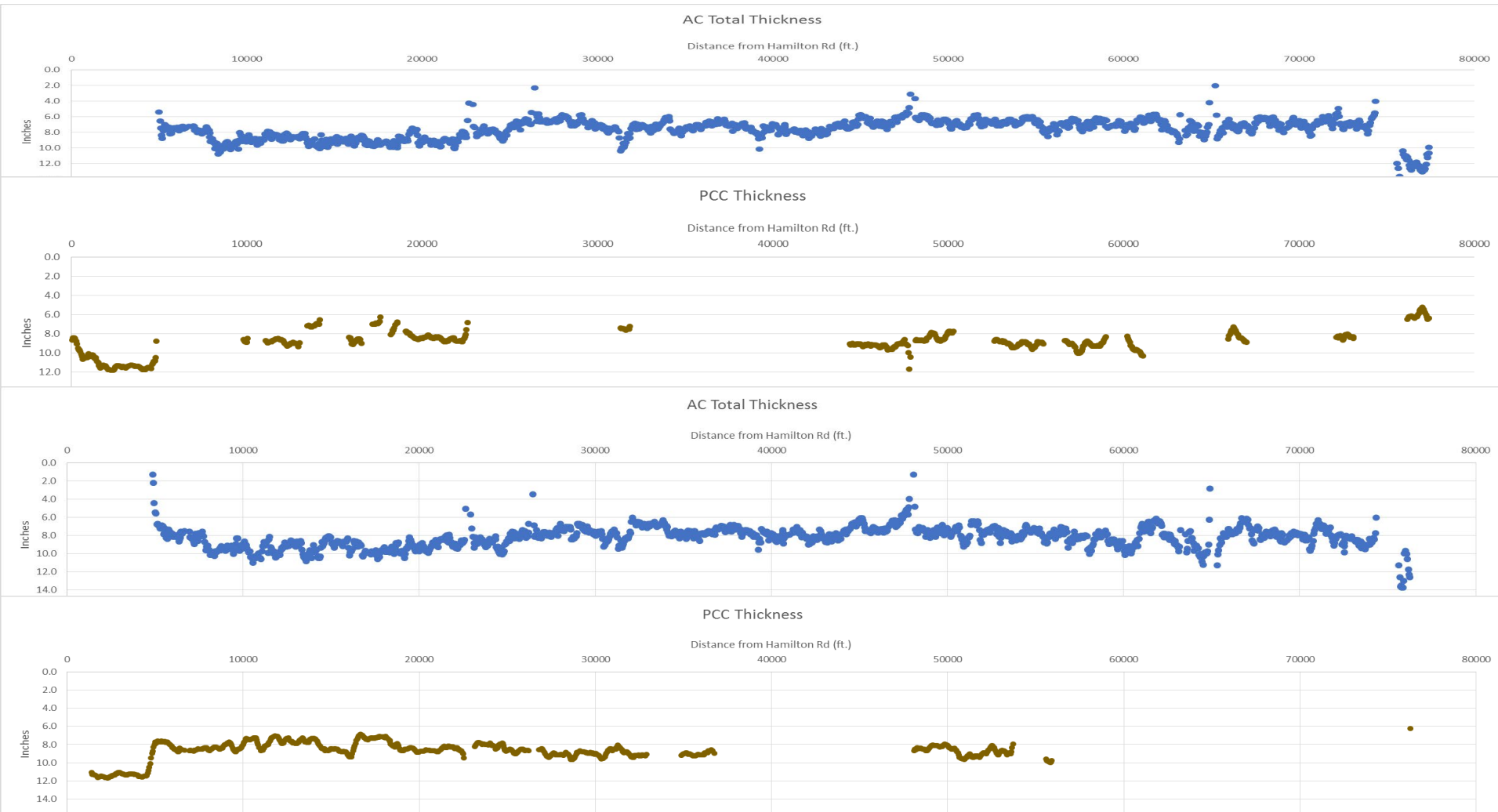
### Southbound Lanes (R & L)



# GPR - I-85 Troup

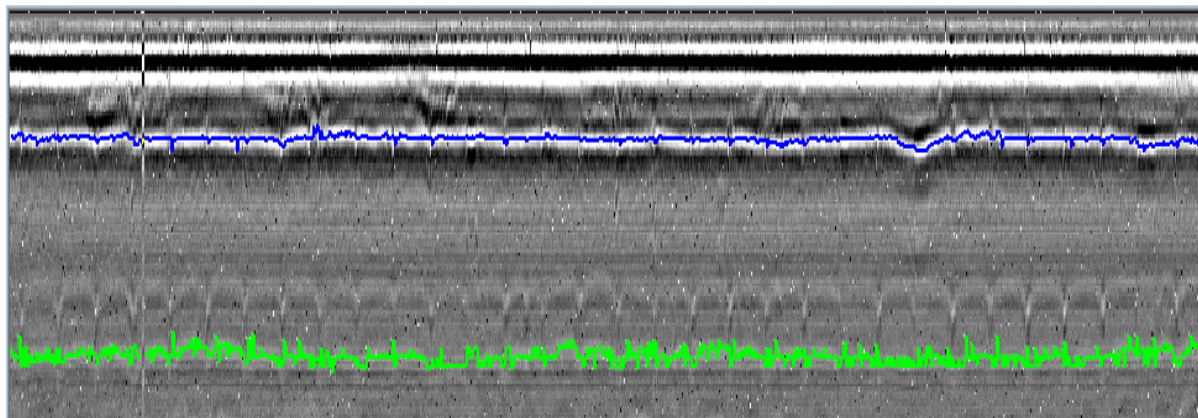
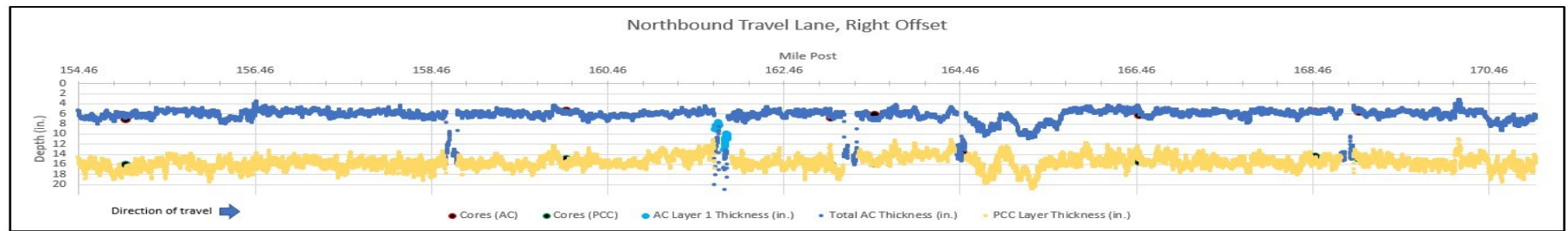
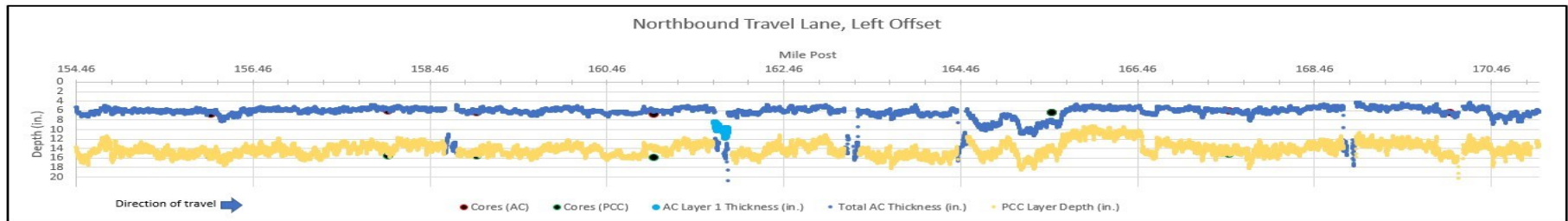
## Resurfacing Quantities & Estimate

### Southbound Lanes (R & L)





# GPR - I-85 Banks-Franklin Pavement Evaluation



# GPR - 1-285 Clayton Void Detection







Monica L. Flournoy, P.E.  
State Materials Engineer  
404-607-4708

**Thank you!**